



an EnerSys Company

EARTHING AND SURGE PROTECTION PRODUCT CATALOGUE



VERSION 1.0

ISSUE DATE: 22 MARCH 2016

SUMMARY:

THIS DOCUMENT LISTS THE EARTHING AND SURGE PROTECTION PARTS AND UPGRADE EQUIPMENT OFFERED BY ICS INDUSTRIES.

About Us

ICS Industries offers a range of unique products for the support, maintenance and upgrade of existing equipment infrastructure and ordinary stand-alone solutions. Access to all parts and equipment is available through our Shop Division.

CONTACT DETAILS

Address: ICS Industries Pty Ltd
309 Settlement Road
Thomastown VIC 3074

Phone: (03) 9474 2008
Fax: (03) 9465 5277

Email: shop@icsindustries.com.au

Shop Operations Manager: Glenn Hartney

Shop Sales & Admin Support: Sue Ings and Hai To

SHOP OPERATING HOURS (MON-FRI)

Office: 8:30am - 4:30pm AEDT
Warehouse: 8:30am - 3:30pm AEDT

Earthing & Surge Protection

SURGE PROTECTOR TDX100M

- Transient voltage surge suppressor. TDX100M 277/480TT.
- Nominal voltage: 277/480 (3ph)
- Protection: 100kA 8/20 μ s
- Replacement model for Critec model: TDX100 277/480



ICS PART NO:

ENX0028

SURGE MODULE TDX100M

- TDX100M Module TDS150M277
- 45mm X 50mm X 18mm (approx.)
- Replacement module for Critec model: TDX100M 277/480TT

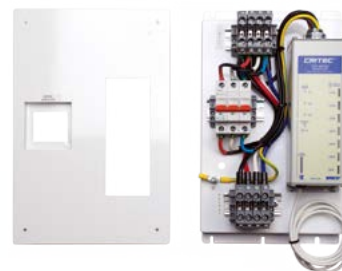


ICS PART NO:

ENX0033

TDX UPGRADE KIT

- Transient Voltage Surge Suppressor
- Critec Model: TDXM 277/480TT
- Can be installed in place of an existing SRF363BS Surge Reduction Filter
- Supplied with new cover plate and installation guide including a template for fitting cover



ICS PART NO:

ENX0031

TDX BOXED WITH MAINS BREAKER

- 490mm H x 310mm W x 110mm D
- TDK Upgrade Kit (ENX0031) fitted into a metal enclosure
- Suitable for Indoor Use Only



ICS PART NO:

ENX0032

SURGE REDUCTION FILTER / DIN RAIL

- 320mm H x 495mm W x 110mm D
- Critec Model: SRF363DRE
- Nominal Voltage U_n : 220-240/380-415 VAC
- Maximum Line Current I: 63A-Unit must be provided with external over-current protection of 63A or less
- Triggered Spark Gap (L-N), Spark Gap (N-G)



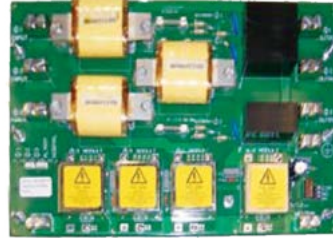
ICS PART NO:

ENX0041

Earthing & Surge Protection

SURGE FILTER 363 PCB-ONLY

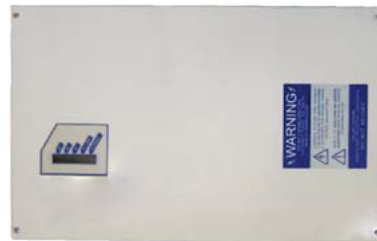
- SRF363BS Surge Reduction Filter
- PCB (Printed Circuit Board) only
- Input voltage: 220-240VAC, 3-Phase
- Load current: 63A Max, per Phase
- Surge rating: 50kA



ICS PART NO:
ENX0011

SURGE FILTER 363 BOXED

- 310mm H X 500mm W x 110mm D
- SRF363BS Surge Reduction Filter
- Input voltage: 220-240VAC, 3-Phase
- Load current 63A Max, per Phase
- Surge rating 50kA



ICS PART NO:
ENX0012

TDS50240 DRM SURGE PROTECTION DEVICE

- Transient Discriminating Suppressor
- DIN-RAIL Mounting (36mm wide)
- 50kA (8/20 μ s)
- Replacement DINLINE Module for SRF340S-CE



ICS PART NO:
ENX0056

TSG CRITEC 1130-240V

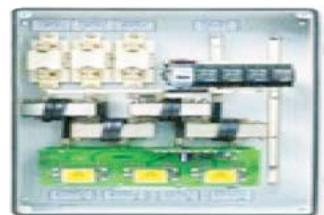
- Triggered Spark Gap
- Nominal voltage: 240V
- Surge rated to: IEC 61643-1 class I & II
- Critec model: TSG1130 2S
- Max Discharge Current: 130kA 8/20 us



ICS PART NO:
ENX0020

TSG-SRF CRITEC 363 COMPLETE

- 400mm W x 500mm H x 170mm D
- Triggered Spark Gap Surge Reduction Filter
- 3-Phase / 63A / 220 to 275V



ICS PART NO:
ENX0021

Earthing & Surge Protection

EARTH BAR / EI-TYPE

- Straight bar, 400mm L x 50mm W x 6mm D
- 12 x 5mm diameter earthing holes
- Bare copper construction



ICS PART NO:

ENX0002

EARTH BAR / EU-TYPE

- Straight bar, 400mm L x 50mm W x 6mm D
- 12 x 5mm diameter earthing holes
- Tinned copper construction



ICS PART NO:

ENX0009

EARTH BAR / TN-TYPE

- Straight bar, 500mm L x 100mm W x 6mm D
- 12 x 7/16" diameter earthing holes
- Bare copper construction



ICS PART NO:

ENX0008

EARTH BAR / 350 X 50 HOLES BARE COPPER

- Straight bar, 350mm L x 50mm W x 6mm D
- 16 x 7mm diameter earthing holes
- 4 x 9mm diameter earthing holes
- Bare copper construction



ICS PART NO:

ENX0027

EARTH BAR VOS / ZONECOOL

- 12 x M10 Bolts
- 490mm x 50mm x 6mm



ICS PART NO:

ENX0097

Earthing & Surge Protection

EARTH BAR / VI-BRASS TYPE

- Straight bar, 250mm L x 150mm²
- Supplied with 2 x block mounting insulators
- Brass construction with 12 x screws



ICS PART NO:
ENX0010

EARTH BAR O-TYPE (ALUMINIUM PLATED)

- 450mm L x 50mm W
- Aluminium plated



ICS PART NO:
ENX0067

EARTH BAR O-TYPE (ALUMINIUM PLATED)

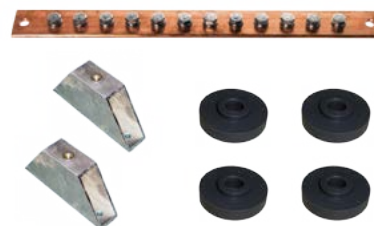
- 350mm L x 50mm W
- Aluminium plated



ICS PART NO:
ENX0068

EARTH BAR T-KIT

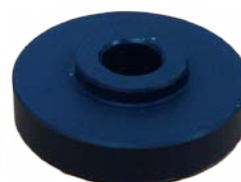
- 1 x TN-type earth bar / 500mm L x 100mm W x 6mm D
- 2 x Stand-off brackets
- 4 x Isolators



ICS PART NO:
ENK0020

EARTH BAR ISOLATOR

- Isolators used for copper earth bars
- Sold in single units



ICS PART NO:
ENX0006

Earthing & Surge Protection

EARTH BAR STAND OFF BRACKET

- Stand off bracket used for copper earth bars



ICS PART NO:

ENX0013

EARTH STRAP STAND OFF BRACKET

- Stand off bracket used for copper earth bars

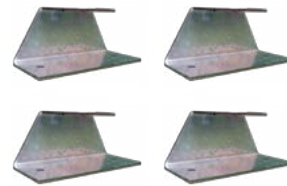


ICS PART NO:

ENX0086

WALL EARTH STRIP KIT

- 4 x Earth strap stand-off bracket
- 1 x Two piece earth strap
- 8 x 1/4" nylon hex nut
- 4 x 1/4" x 3/4" nylon set screw

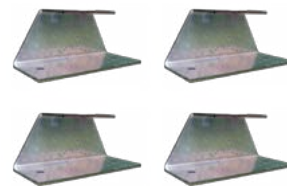


ICS PART NO:

ENK0003

WALL EARTH STAND OFF KIT

- 4 x Earth strap stand-off bracket
- 8 x 1/4" nylon hex nut
- 4 x 1/4" x 3/4" nylon set screw



ICS PART NO:

ENK0004

EARTH STRAP O-TYPE

- 1330mm L x 25mm W
- Copper earth strap



ICS PART NO:

ENX0016

Earthing & Surge Protection

EARTH STRAP 2 PIECE

- Two piece copper earth strap
- 1330mm L x 25mm W



ICS PART NO:

ENX0088

EARTH BAR / CABLE LADDER 300

- Tinned copper construction
- Suits 300mm wide cable ladder



ICS PART NO:

ENX0003

EARTH BAR / CABLE LADDER 450

- Tinned copper construction
- Suits 450mm wide cable ladder



ICS PART NO:

ENX0004

EARTH BAR / CABLE LADDER 600

- Tinned copper construction
- Suits 600mm wide cable ladder



ICS PART NO:

ENX0005

CABLE LADDER EARTH BAR SUPPORT

- 450mm inner length
- 625mm outer length
- Galvanised steel construction



ICS PART NO:

ENX0001

Earthing & Surge Protection

2 X HOLE CABLE CRIMP LUGS

- ICS Part No: EFLUG016-2X06 – Cable lug 16mm², 2 x 6mm holes
- ICS Part No: EFLUG035-2X06 – Cable lug 35mm², 2 x 6mm holes
- ICS Part No: EFLUG035-2X06 – Cable lug 35mm², 2 x 8mm holes



ICS PART NO:

VARIOUS

50M COIL COPPER TAPE 25 X 3MM

- 25mm x 3mm Copper Tape
- 50m roll
- DSA, electrical grade copper



ICS PART NO:

ENK0011

EARTH STAKE COPPER 5/8" X 5FT

- 5/8" x 5' Copper-bonded earth rods



ICS PART NO:

ENX0017

EARTH ROD COPPER CONNECTOR 5/8

- 5/8" Copper rod coupler
- * 5/8" Stainless steel rod coupler – ICS Part No: ENX0015



ICS PART NO:

ENX0014

CLAMP 13-15MM ROD 35-120MM²

- Cable to rod clamp
- 5/8" Earth rod to 16-120mm² cable



ICS PART NO:

EF13-15R35-120C



an EnerSys Company

HEAD OFFICE

309 Settlement Road, Thomastown VIC 3074

BRANCH OFFICES

46 Egerton Street, Silverwater NSW 2128

28 Duntroon Street, Brendale QLD 4500

3 Sandra Place, Welshpool WA 6106

57 Orsmond Street, Hindmarsh SA 5007

PH 1800 010 027

EMAIL ics@icsindustries.com.au

WEB www.icsindustries.com.au

